

ProSpec GN1/3 Salad Preparation Drop-in Collar Installation

These instructions apply to SKOPE ProSpec GN1/3 Salad Preparation Drop-in Collar Fridge cabinets with a specifically designed worktop drop-in collar. Follow these instructions to install the collar.

- Procedure 1, "To prepare the cabinet", on page 1
- Procedure 2, "To position the drop-in collar on the cabinet", on page 2
- Procedure 3, "To install the top frame", on page 2

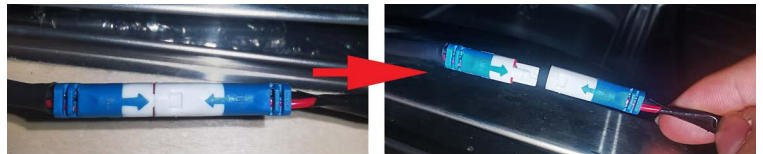
Procedure 1: To prepare the cabinet

Before you start

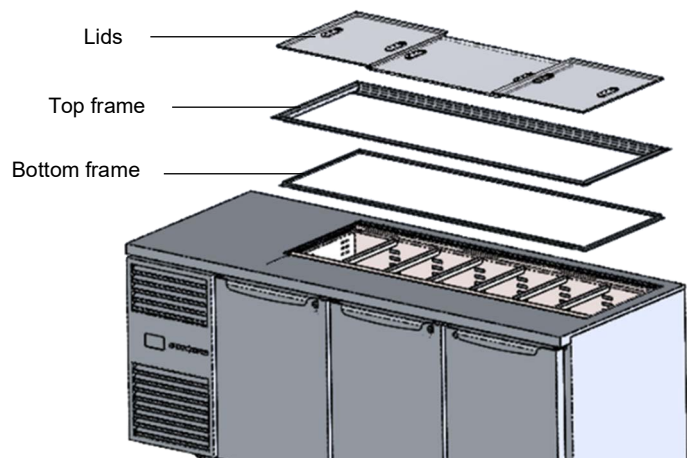
Inspect the kitchen benchtop to ensure that it complies with the "MK1529" drawing.

1. Disconnect the cabinet from the mains power supply.

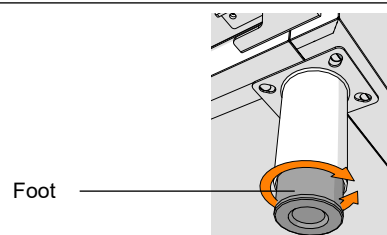
2. Disconnect the collar heat element plug from the cabinet.



3. Remove the lids and drop-in collar top frame from the cabinet.



4. Adjust the 5 × legs to lower the height of the cabinet.
 - Turn the foot at the bottom of the leg clockwise to lower the height.
 - Turn the foot at the bottom of the leg anti-clockwise to raise the height.



5. If the customer's benchtop is not high enough to position the cabinet underneath with the bottom frame in place, remove it by unscrewing the self-tapping screws.

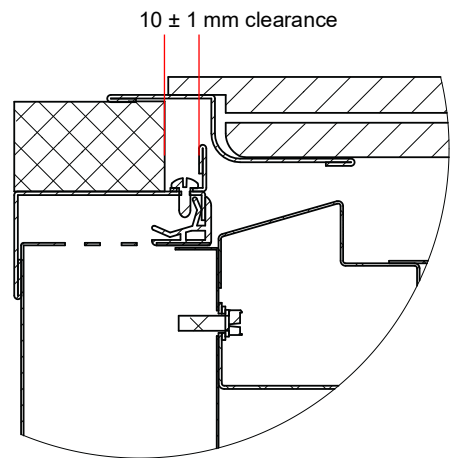
Self-tapping screw



Procedure 2: To position the drop-in collar on the cabinet

1. Slide the cabinet under the customer's benchtop. Align the benchtop with the cut-out opening.

2. Align the cabinet's cooling well opening and customer's benchtop opening with a 10 ± 1 mm clearance all around.



3. If you removed the collar's bottom frame, refit this to the cabinet top by mounting it in its original position and securing with the self-tapping screws.
4. Raise the cabinet by adjusting the 5 × adjustable legs until the cabinet top is touching the bottom of the customer's benchtop on all sides. Ensure that no parts or wires are trapped while you raise the cabinet.

Procedure 3: To install the top frame

1. Place the drop-in collar top frame upside down on the customer's benchtop.

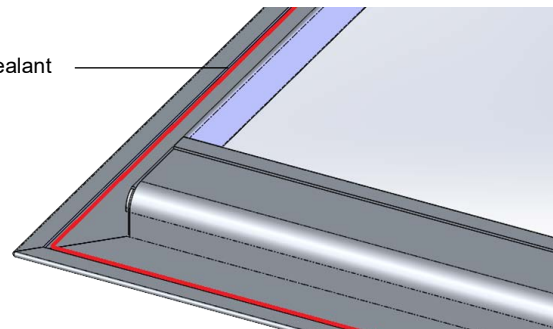
2. Reconnect the collar heat element.

- Connect heat element plug to the plug on the cabinet side.
- Connect the cabinet to the mains power supply.
Note: Make sure the arrow on the plug aligns with the arrow on the socket when you connect them.
- Check that the heat element heats up.



3. Apply a bead of glue or sealant around the underside of the drop-in collar top frame.

Glue or sealant



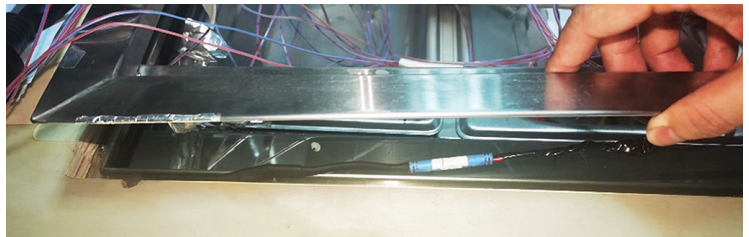
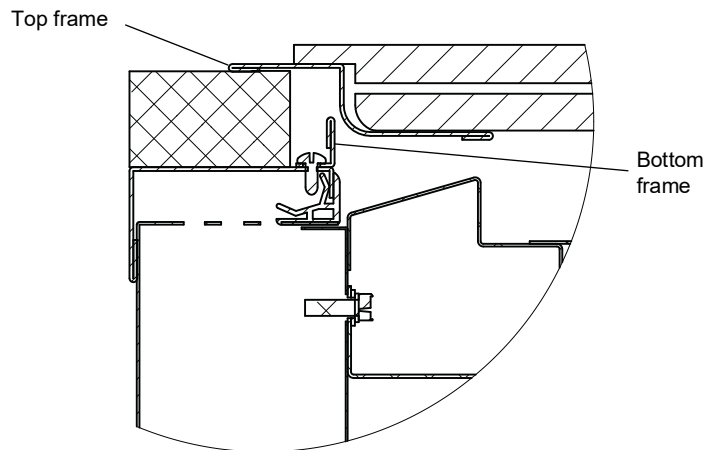
4. Stow the heat element connector and wires into the gap between the customer's benchtop and the bottom frame.



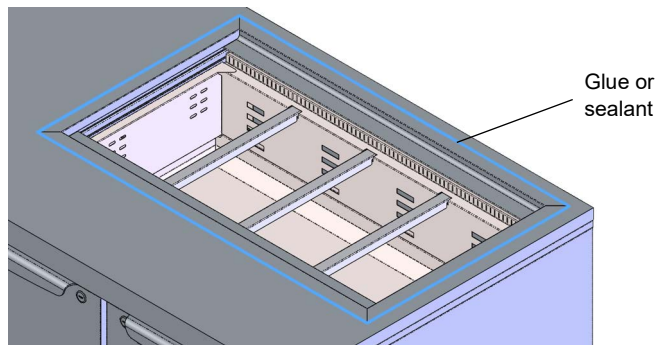
Gap

Procedure 3: To install the top frame (continued)

5. Rotate the top frame into position on the customer's benchtop, taking care not to damage the heat element wires. The top frame will nest within the bottom frame.



6. Apply glue or sealant around the edge of the drop-in collar to stop food getting trapped after the collar has been installed.



7. Use weights to hold the top frame in position while the glue or sealant cures.
8. Refit the lids.
9. Turn the cabinet on and check for correct operation.