

ActiveCore2 Door Hinge Reversal

The ActiveCore2 door hinge reversal kit is suitable for hinge reversal from right hand (factory specification) to left hand hinging on a single-door ActiveCore2 (N Series) cabinets. If reversing hinging from left to right hand some opposite parts will be required. Refer to the product service manual for more information.

ActiveCore2 vs Traditional ActiveCore

This kit is not suitable for traditional ActiveCore doors.

ActiveCore2 doors feature a straight edge screen print with logos. Traditional ActiveCore doors feature a dot screen print with stick-on logo labels. Refer to instruction sheet PRN11115 for information on traditional ActiveCore door hinge reversal.

Parts

The following parts are included in the door hinge reversal kit. You will need to keep some parts removed during the procedure to use on the opposite hinge.

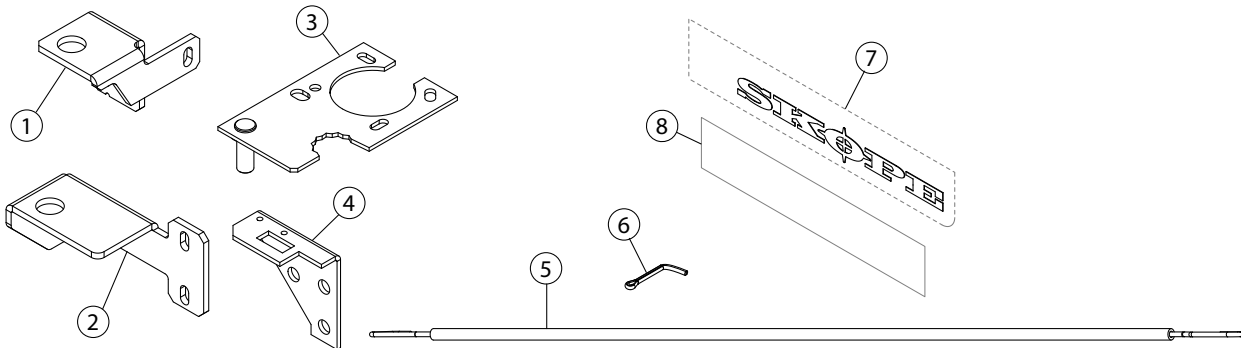


Table 1: Kit part numbers

No.	Description	Included in:				SKOPE Part Number
		Bottom mount white kit	Bottom mount black kit	Top mount white kit	Top mount black kit	
-	Bottom mount kit – white	✓	-	-	-	SM60BYN/D100-32
-	Bottom mount kit – black	-	✓	-	-	SM60BYN/D100-49
-	Top mount kit – white	-	-	✓	-	SM65BYN/D100-32
-	Top mount kit – black	-	-	-	✓	SM65BYN/D100-49
1	Left hand bottom hinge	✓	✓	-	-	HB0070110579
2	Left hand bottom hinge	-	-	✓	✓	HB0070110850
3	Left hand top hinge	-	✓	-	✓	HB0070110583
		✓	-	✓	-	HB0070110583A
4	Right hand door sensor bracket	✓	-	-	-	SM60BV/U06R-32
		-	✓	-	-	SM60BV/U06R-49
5	Torsion bar	✓	✓	✓	✓	REF5014
6	Split pin	✓	✓	✓	✓	FAS5076
7	SKOPE logo label	✓	-	✓	-	HB0070511490
		-	✓	-	✓	HB0070514772
8	Blanking label × 2	✓	-	✓	-	LAB11885W
		-	✓	-	✓	LAB11885B
-	Instruction sheet	✓	✓	✓	✓	PRN80198

Procedure

Follow the procedures below to reverse the door hinging.

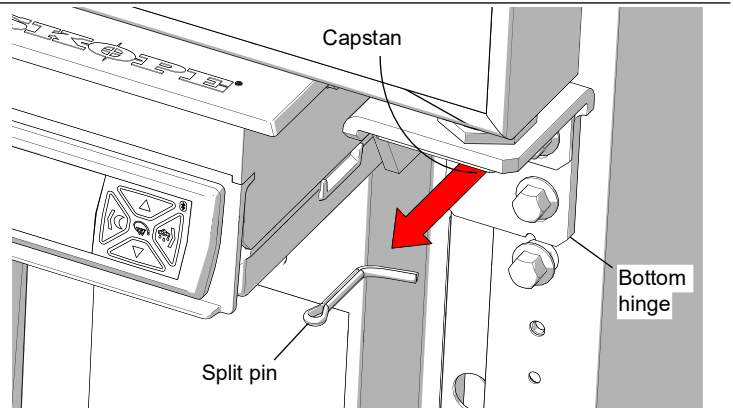
WARNING

Ensure the cabinet is isolated from the mains power supply before beginning the procedure.

Procedure 1: Remove the door

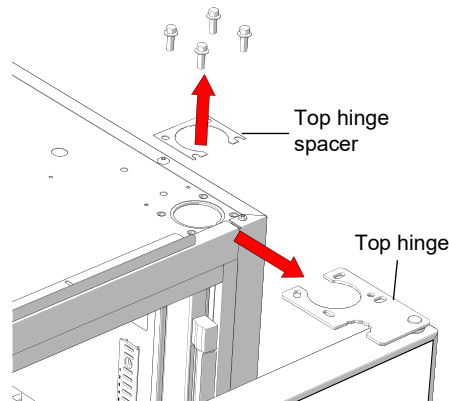
1. Isolate the cabinet from the power supply.
2. If present, remove the sign panel, sign back strip and sign sides.
TME/SKT cabinets: Detach the refrigeration cartridge and carefully push back to allow access to the top hinge.
BME/SKB cabinets: Remove the front kick panel.

3. Remove the split pin from the capstan at the bottom hinge.



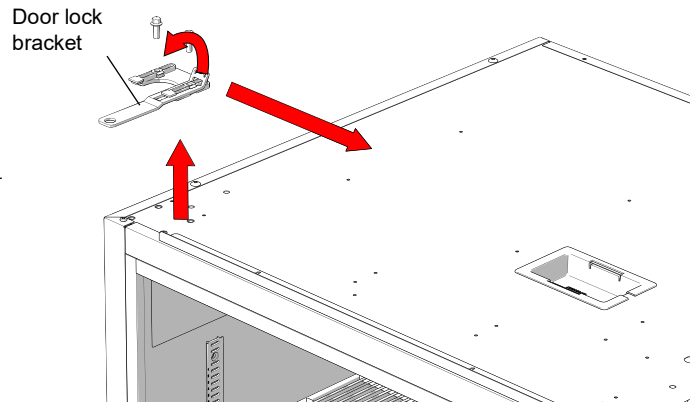
4. Unscrew the top hinge, and lift the door up and off the cabinet. Keep the top hinge for door tensioning (later on in the procedure).

BME/SKB cabinets: Remove the top hinge spacer and keep for using when you fit the new top hinge on the opposite side.



Procedure 2: Modify the cabinet for hinge reversal

1. Remove the door lock bracket from the top of the cabinet and fit to the other side.



2. Remove the sliding tab from the bracket and fit to the inside to ensure the tab aligns with the door tab.

3. Remove the bottom hinge (1), tension bracket (2) and height adjustment block (3).

- Keep the tension bracket and height adjustment block (these are fitted to the opposite side once the door is refitted).
- Discard the bottom hinge.

4. Unplug the door switch cable from the cabinet.

TME/SKT cabinets: The door switch is located above the door.

BME cabinets: The door switch is fitted to the door switch bracket, below the door.

SKB cabinets: The door switch is fitted to the front of the cabinet, below the door.

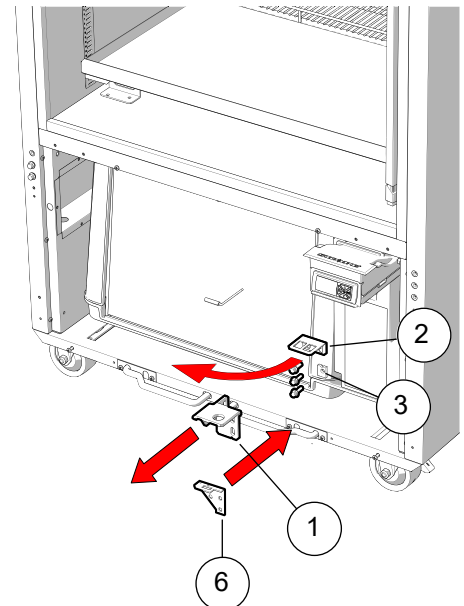
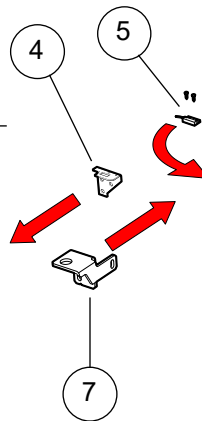
5. Swap the door switch over.

BME cabinets:

- Remove the door switch bracket (4) and detach the door switch (5).
- Discard the bracket.
- Fit the door switch to the new bracket (6).
- Fit the bracket to the opposite side of the cabinet.
- Plug the door switch cable into the opposite side socket.

SKB cabinets:

- Remove the door switch from the front of the cabinet, and fit it to the opposite side of the cabinet.
- Plug the door switch cable into the opposite side socket.



6. Fit the new bottom hinge (7).

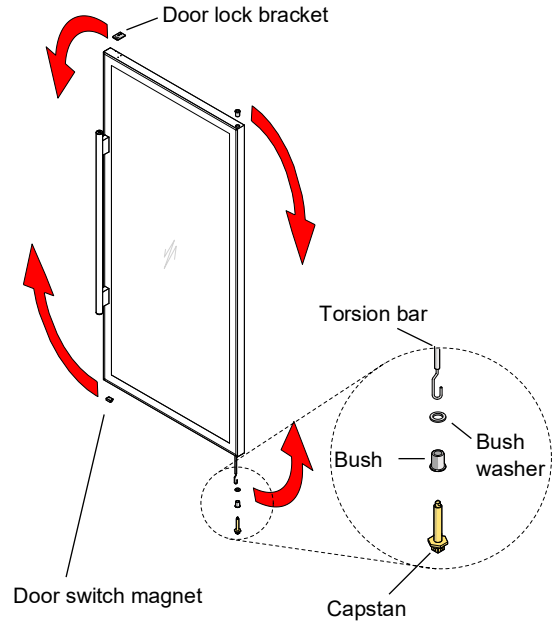
Note: The top-most screw can be left off until the tension bracket is fitted, later on in the procedure.

Procedure 3: Modify the door for reversing the hinge

1. Remove the door lock bracket, and fit it to the opposite end of the door.
2. Remove the bush and keep it for the other end of the door.
3. Remove the capstan, bush and bush washer, and unhook from the torsion bar.

Note: The torsion bar cannot easily be removed from the door. Push the torsion bar into the door frame.
4. Attach the capstan, bush and bush washer to the new torsion bar.
5. Lift the gasket on the corner of the door that you're going to fit the torsion bar assembly to, and remove the two screws that will stop the torsion bar going into the channel.
6. Fit the torsion bar assembly to the door.
7. Replace the screws removed in step 5 and seat the gasket properly in the frame groove.
8. Fit the bush (kept from step 2) to the end of the door, opposite the capstan.
9. Remove the door switch magnet from the end of the door, and fit it to the opposite end.

Note: Make sure the magnet is oriented correctly and does not protrude past the edge of the frame.

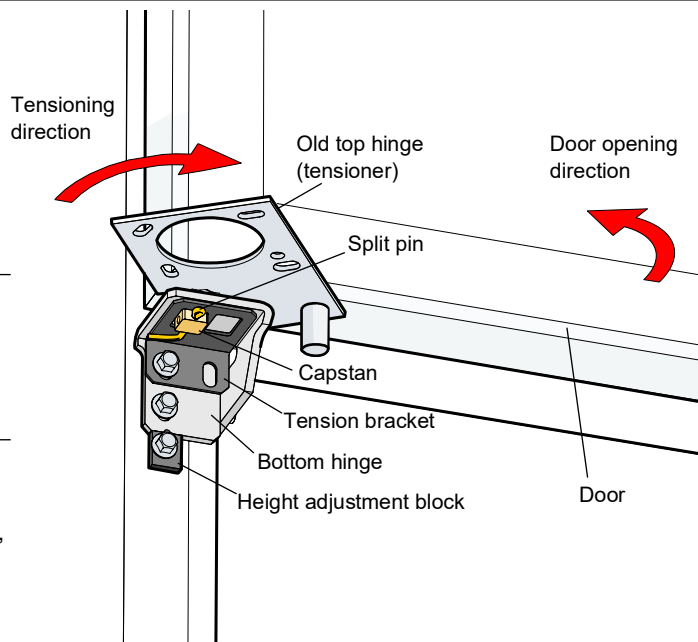


Procedure 4: Refit the door

1. Lift the door onto the bottom hinge.
2. Fit the top hinge to the top of the door, and partially fix in place on the top of the cabinet. Align the door with the cabinet and tighten the fixing screws.

BME/SKB cabinets: Ensure the top hinge spacer is fitted under the top hinge before fixing the top hinge in place.
3. Fit the height adjustment block to the bottom screw hole. As standard, the notched edges on the bottom of the hinge and the top of the height adjustment block align to set the door to the correct level. If necessary, rotate the height adjustment block to level the door.

4. Use the old top hinge to apply tension to the door via the capstan.
 - First, rotate the capstan against the door opening direction to remove any slack.
 - Once resistance is felt, continue to rotate 180° to provide tension.
 - While holding door tension on the capstan, fit the tension bracket to the top screw hole so that it supports the door tension on the capstan.
5. Fit the split pin through the hole in the capstan to lock the door in place.
6. Check door tension by holding the door open about 100 mm and letting it go. The door should gently close, with the gasket forming an airtight seal with the cabinet.



Procedure 5: Reassemble the cabinet and apply new labels

1. Reassemble the cabinet.

2. Apply the SKOPE logo label to the top left hand corner of the door. Use the label backing to align the label as pictured.



3. Apply the blanking labels over the upside down SKOPE and ActiveCore logos at the bottom of the door.

